

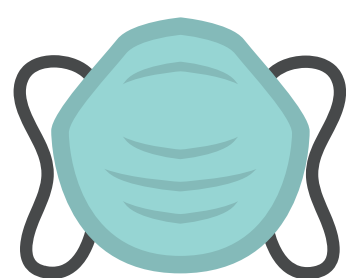


Enhanced Security Measures Due to COVID-19



READ THIS BEFORE YOU COME TO COURT

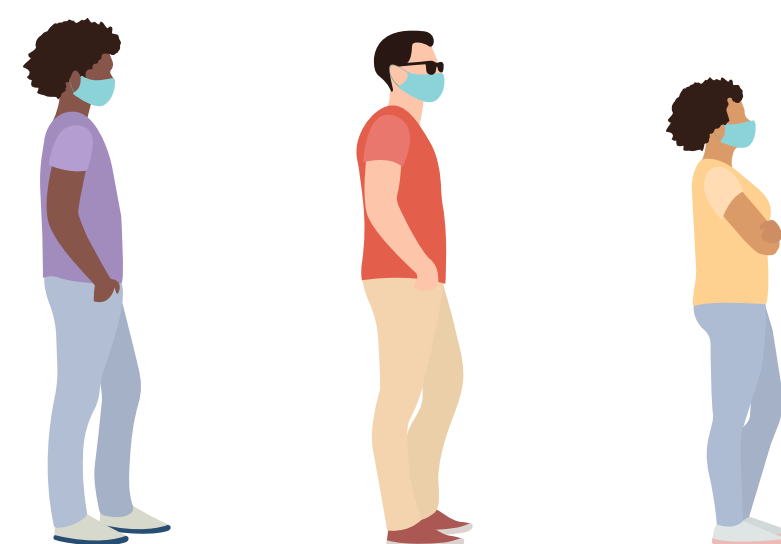
IF YOUR CASE TYPE IS NOT BEING HEARD AT THIS TIME, YOU MAY NOT BE ADMITTED INTO THE COURTHOUSE. SEE BELOW FOR OTHER FILING AND PAYMENT OPTIONS.



Wear a face covering at all times

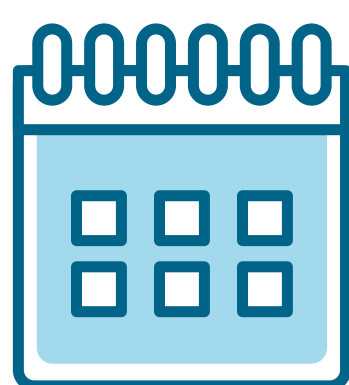


Maintain six feet of distance



**Wait in line until let in to conduct court business
Bring Water!**

See [general order limiting court visitors](#)



Individuals with cases on calendar will be given priority entrance at least 30 minutes prior

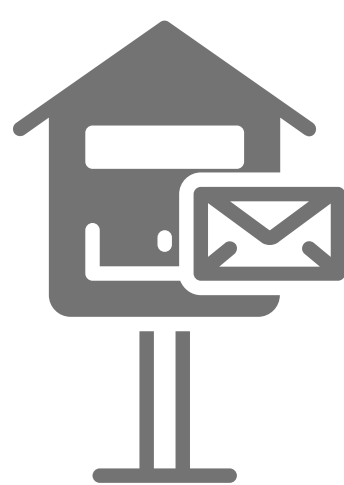


**General seating will be limited
Click [here](#) for ADA Info**



Children are not recommended and Children's Waiting Rooms are closed until further notice

OTHER FILING, APPEARANCE AND PAYMENT OPTIONS



Drop boxes for filings



Fax filings



**Make payments, access Self-Help, & schedule appointments
visit www.sb-court.org**



Court Call Turbo Court



Mail in payments and filings